

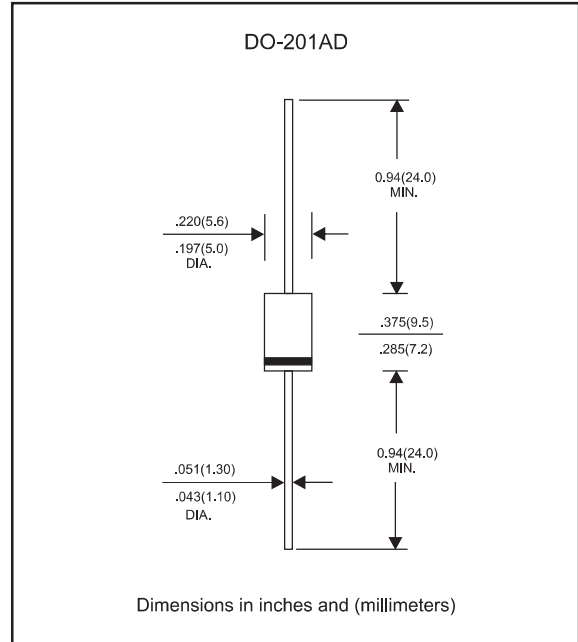
### Features

- Low reverse leakage current
- Low forward drop voltage & high current capability
- High surge current capability
- Super fast switching speed for high efficiency
- Glass passivated chip junction
- High Reliability
- Lead-free parts for green partner, meet RoHS requirements
- Suffix "-H" indicates Halgon free parts, ex. SF51G-H.

### Mechanical data

- Epoxy : UL94-V0 rated flame retardant
- Case : Molded plastic, DO-201AD
- Lead : Axial leads, solderable per MIL-STD-202, Method 208 guranteed
- Polarity: Color band denotes cathode end
- Mounting Position : Any

### Package outline



### Maximum ratings and Electrical Characteristics (AT $T_A=25^{\circ}\text{C}$ unless otherwise noted)

PARAMETER	CONDITIONS	Symbol	MIN.	TYP.	MAX.	UNIT
Forward rectified current	Ambient temperature = $55^{\circ}\text{C}$	$I_o$			5.0	A
Forward surge current	8.3ms single half sine-wave (JEDEC methode)	$I_{FSM}$			150	A
Reverse current	$V_R = V_{RRM}$ $T_J = 25^{\circ}\text{C}$	$I_R$			5.0	$\mu\text{A}$
	$V_R = V_{RRM}$ $T_J = 125^{\circ}\text{C}$				150	
Thermal resistance	Junction to ambient	$R_{\theta JA}$		30		$^{\circ}\text{C}/\text{W}$
Diode junction capacitance	$f=1\text{MHz}$ and applied 4V DC reverse voltage	$C_J$		80		pF
Storage temperature		$T_{STG}$	-65		+175	$^{\circ}\text{C}$

SYMBOLS	$V_{RRM}^{*1}$ (V)	$V_{RMS}^{*2}$ (V)	$V_R^{*3}$ (V)	$V_F^{*4}$ (V)	$t_{rr}^{*5}$ (ns)	Operating temperature $T_J$ , ( $^{\circ}\text{C}$ )
SF51G	50	35	50	0.95	35	-55 to +150
SF52G	100	70	100			
SF53G	150	105	150			
SF54G	200	140	200			
SF55G	300	210	300	1.30	35	-55 to +150
SF56G	400	280	400			
SF57G	500	350	500			
SF58G	600	420	600	1.70	35	-55 to +150

\*1 Repetitive peak reverse voltage

\*2 RMS voltage

\*3 Continuous reverse voltage

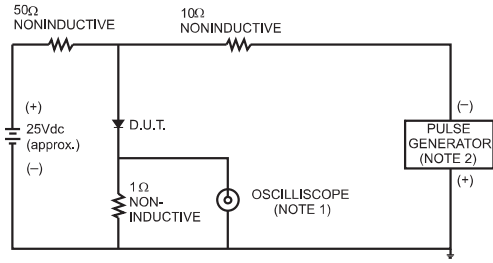
\*4 Maximum forward voltage@ $I_F=5.0\text{A}$

\*5 Maximum Reverse recovery time, note 1

Note 1. Reverse recovery time test condition,  $I_F=0.5\text{A}$ ,  $I_R=1.0\text{A}$ ,  $I_{RR}=0.25\text{A}$

## Rating and characteristic curves (SF51G THRU SF58G)

FIG.1- TEST CIRCUIT DIAGRAM AND REVERSE RECOVERY TIME CHARACTERISTIC



NOTES: 1. Rise Time= 7ns max., Input Impedance= 1 megohm,22pF.  
2. Rise Time= 10ns max., Source Impedance= 50 ohms.

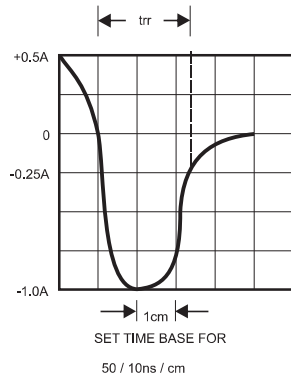


FIG.2-TYPICAL FORWARD CURRENT DERATING CURVE

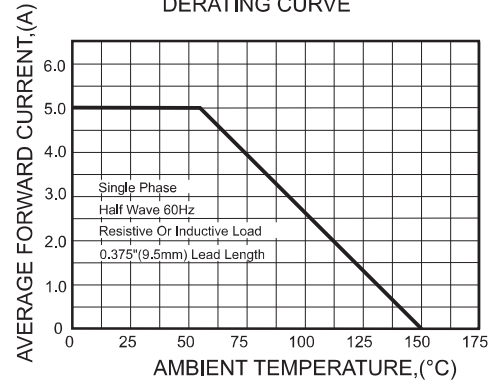


FIG. 3 - TYPICAL FORWARD CHARACTERISTICS

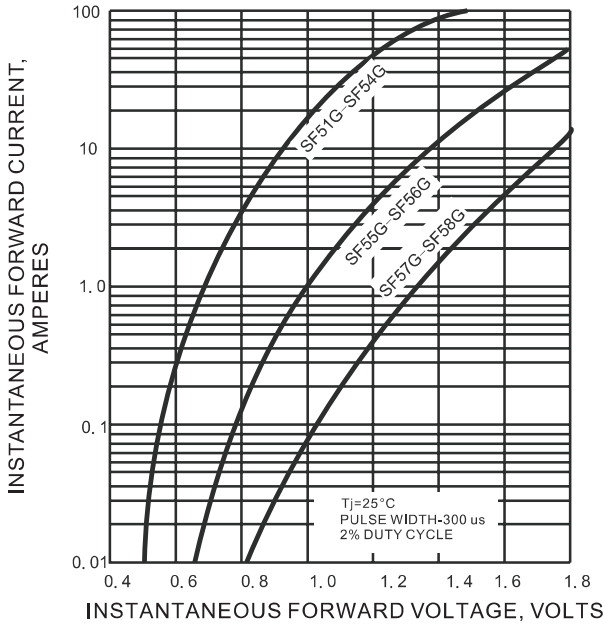


FIG.4-TYPICAL REVERSE CHARACTERISTICS

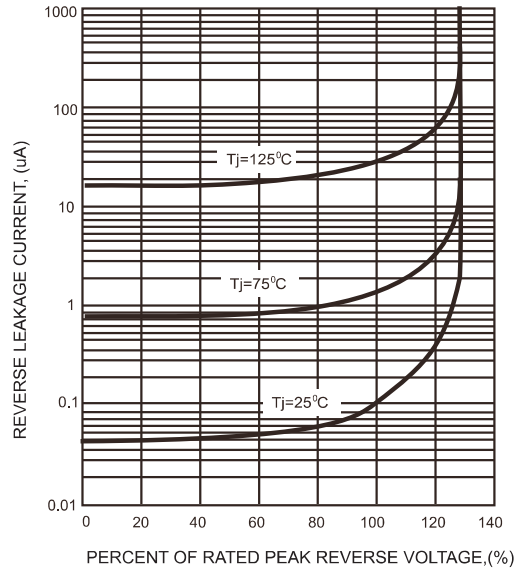


FIG.5-MAXIMUM NON-REPETITIVE FORWARD SURGE CURRENT

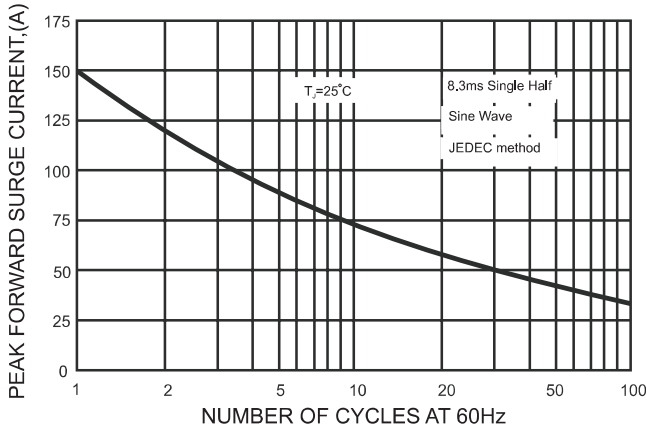
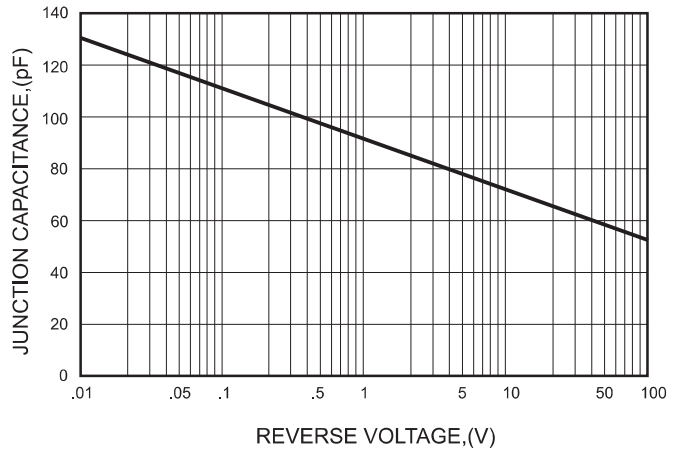




FIG.6-TYPICAL JUNCTION CAPACITANCE



## Pinning information

Pin	Simplified outline	Symbol
Pin1 cathode Pin2 anode		

## Marking

Type number	Marking code
SF51G	SF51G
SF52G	SF52G
SF53G	SF53G
SF54G	SF54G
SF55G	SF55G
SF56G	SF56G
SF57G	SF57G
SF58G	SF58G