

Product Summary

$V_{(BR)DSS}$	$R_{DS(on)MAX}$	I_D
40V	7mΩ@10V	60A
	9mΩ@4.5V	

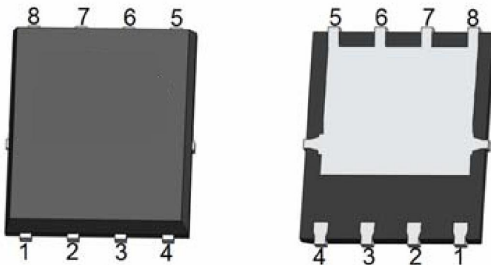
Feature

- Trench Power MV MOSFET technology
- Excellent package for heat dissipation
- High density cell design for low $R_{DS(ON)}$

Application

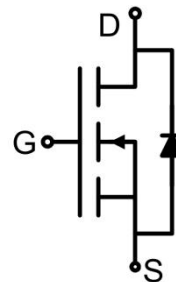
- Power switching application
- Uninterruptible power supply
- DC-DC converter

Package

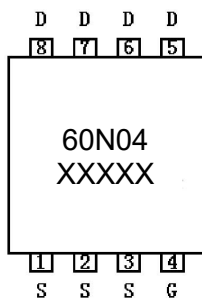


PDFN5*6-8L

Circuit diagram



Marking



Absolute maximum ratings ($T_A=25^\circ\text{C}$ unless otherwise noted)

Parameter	Symbol	Value	Unit
Drain-Source Voltage	V_{DS}	40	V
Gate-Source Voltage	V_{GS}	± 20	V
Continuous Drain Current($T_C = 25^\circ\text{C}$)	I_D	60	A
Continuous Drain Current($T_C = 100^\circ\text{C}$)	$I_D(100^\circ\text{C})$	37	A
Pulsed Drain Current ¹⁾	I_{DM}	200	A
Power Dissipation ³⁾	P_D	2.5	W
Thermal Resistance,Junction-to-Ambient ⁴⁾	$R_{\theta JA}$	50	$^\circ\text{C}/\text{W}$
Thermal Resistance,Junction-to-Case	$R_{\theta JC}$	1.5	$^\circ\text{C}/\text{W}$
Single pulse avalanche energy ²⁾	E_{AS}	100	mJ
Junction Temperature	T_J	150	$^\circ\text{C}$
Storage Temperature	T_{STG}	-55 ~ +150	$^\circ\text{C}$

Electrical characteristics ($T_J=25^\circ\text{C}$, unless otherwise noted)

Parameter	Symbol	Test Condition	Min.	Typ.	Max.	Unit
Static Characteristics						
Drain-source breakdown voltage	$V_{(BR)DSS}$	$V_{GS} = 0V, I_D = 250\mu\text{A}$	40			V
Zero gate voltage drain current	I_{DSS}	$V_{DS} = 40V, V_{GS} = 0V$			1	μA
Gate-body leakage current	I_{GSS}	$V_{GS} = \pm 20V, V_{DS} = 0V$			± 100	nA
Gate threshold voltage	$V_{GS(th)}$	$V_{DS} = V_{GS}, I_D = 250\mu\text{A}$	1.0	1.5	2.5	V
Drain-source on-resistance	$R_{DS(on)}$	$V_{GS} = 10V, I_D = 20A$		5	7	m Ω
		$V_{GS} = 4.5V, I_D = 10A$		6.5	9	
Gate resistance	R_G	$F = 1.0\text{MHz}$		1.7		Ω
Dynamic characteristics⁵⁾						
Input Capacitance	C_{iss}	$V_{DS} = 20V, V_{GS} = 0V, f = 1\text{MHz}$		1900		pF
Output Capacitance	C_{oss}			195		
Reverse Transfer Capacitance	C_{rss}			175		
Total Gate Charge	Q_g	$V_{DS} = 20V, V_{GS} = 10V, I_D = 30A$		42		nC
Gate-Source Charge	Q_{gs}			6		
Gate-Drain Charge	Q_{gd}			11		
Turn-on delay time	$t_{d(on)}$	$V_{DD} = 20V, V_{GS} = 10V, I_D = 30A, R_{GEN} = 2.2\Omega$		9		nS
Turn-on rise time	t_r			146		
Turn-off delay time	$t_{d(off)}$			21		
Turn-off fall time	t_f			18		
Source-Drain Diode characteristics						
Diode Forward Current	I_S				60	A
Diode Forward voltage	V_{SD}	$V_{GS} = 0V, I_S = 30A$			1.2	V
Reverse Recovery Time	t_{rr}	$I_F = 30A, di/dt = 250A/\mu\text{s}$		14		nS
Reverse Recovery Charge	Q_{rr}			10		nC

Notes:

- 1) Repetitive rating; pulse width limited by max. junction temperature.
- 2) $T_J = 25^\circ\text{C}$, $V_{DD} = 38V$, $V_G = 10V$, $R_G = 25\Omega$, $L = 0.5\text{mH}$, $I_{AS} = 20A$.
- 3) P_d is based on max. junction temperature, using junction-case thermal resistance.
- 4) The value of $R_{\theta JA}$ is measured with the device mounted on 1 in² FR-4 board with 2oz. Copper, in the still air environment with $T_A = 25^\circ\text{C}$. The maximum allowed junction temperature of 150 $^\circ\text{C}$. The value in any given application depends on the user's specific board design.
- 5) Guaranteed by design, not subject to production testing.

Typical Characteristics

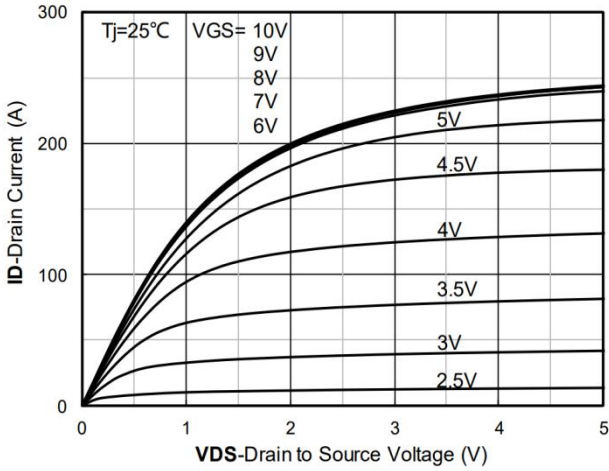


Figure 1. Output Characteristics

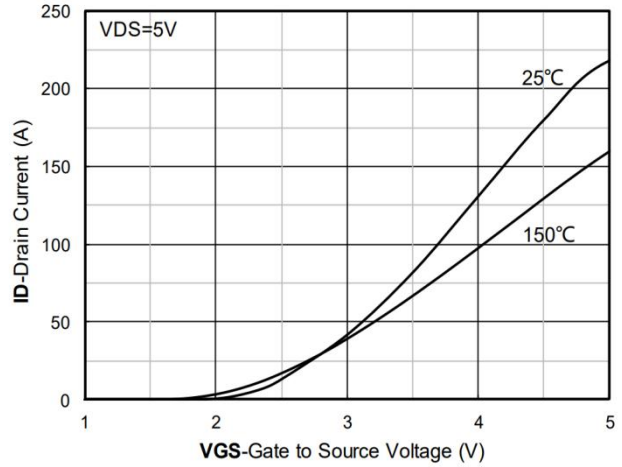


Figure 2. Transfer Characteristics

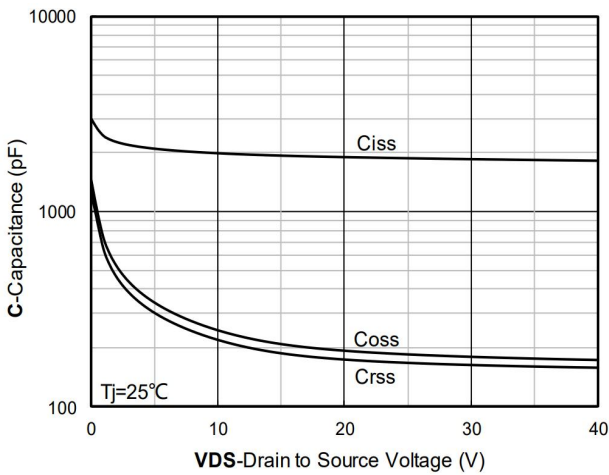


Figure 3. Capacitance Characteristics

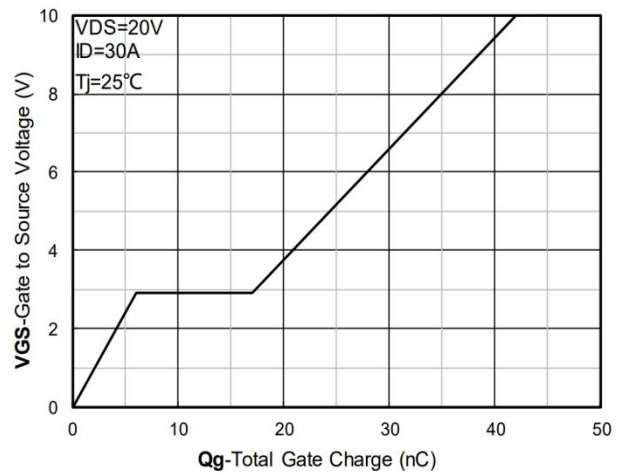


Figure 4. Gate Charge

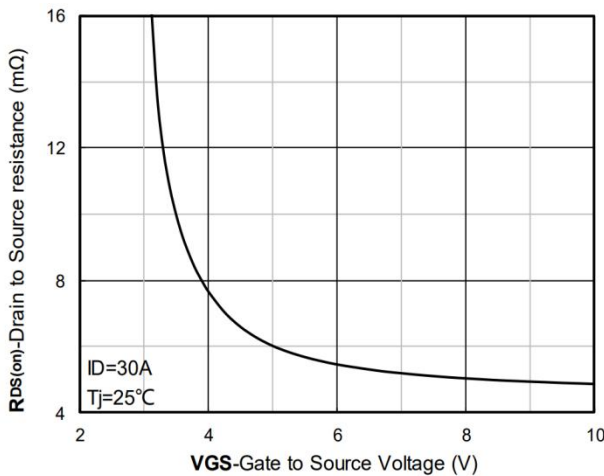


Figure 5. On-Resistance vs Gate to Source Voltage

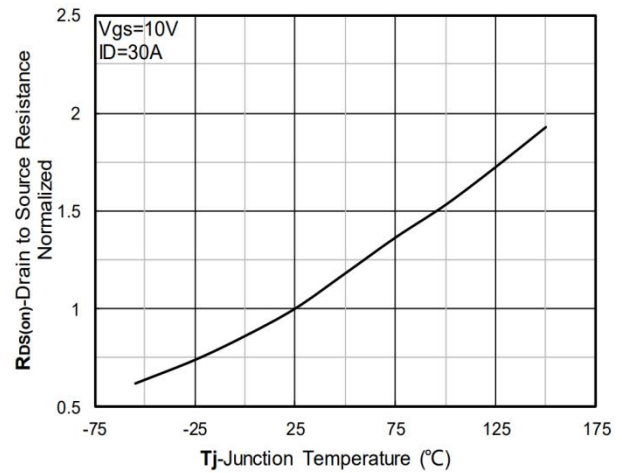


Figure 6. Normalized On-Resistance

Typical Characteristics

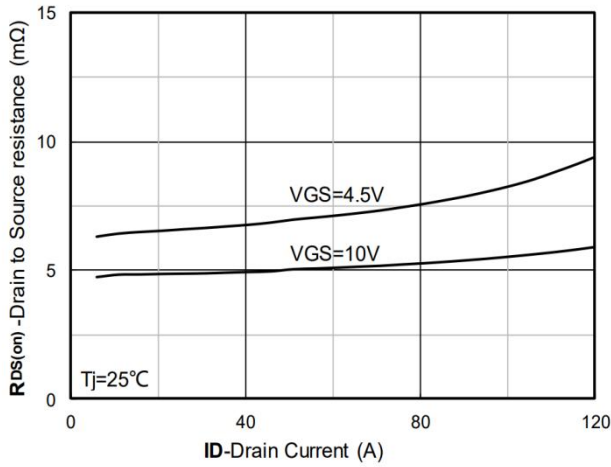


Figure 7. RDS(on) VS Drain Current

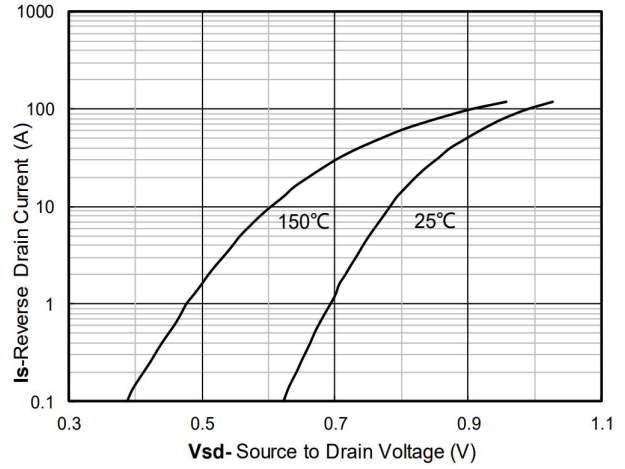


Figure 8. Forward characteristics of reverse diode

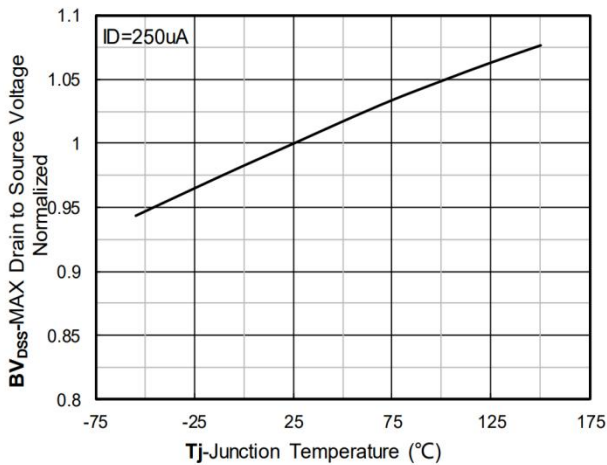


Figure 9. Normalized breakdown voltage

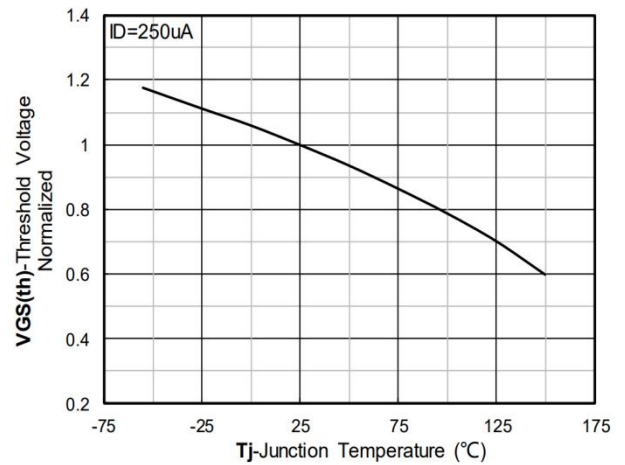


Figure 10. Normalized Threshold voltage

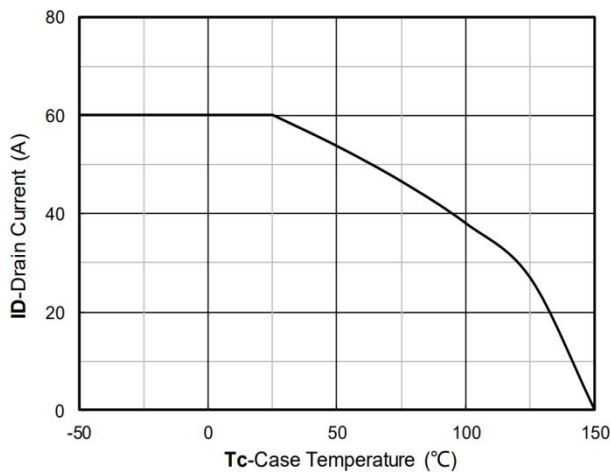


Figure 11. Current dissipation

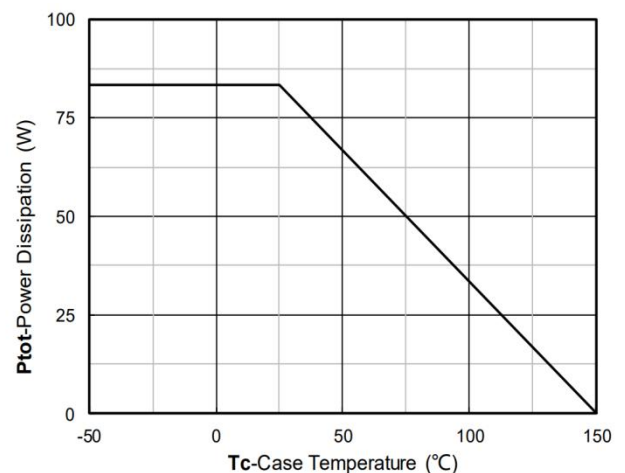


Figure 12. Power dissipation

Typical Characteristics

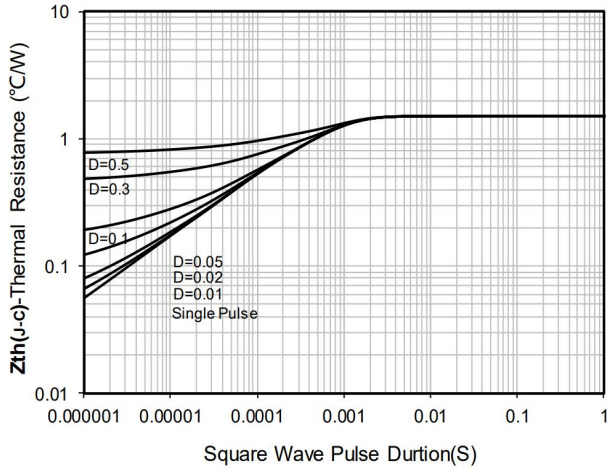


Figure 13. Maximum Transient Thermal Impedance

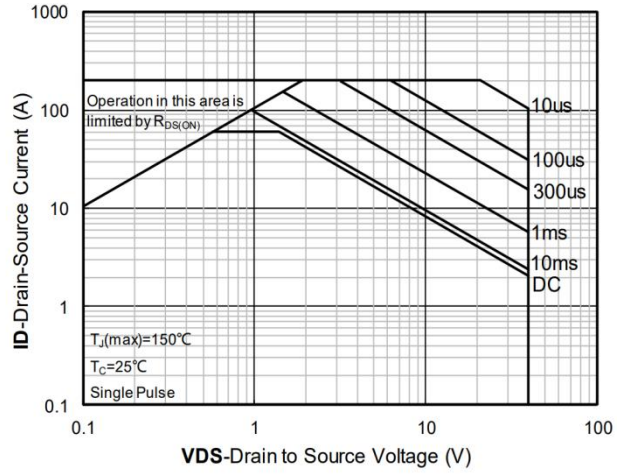
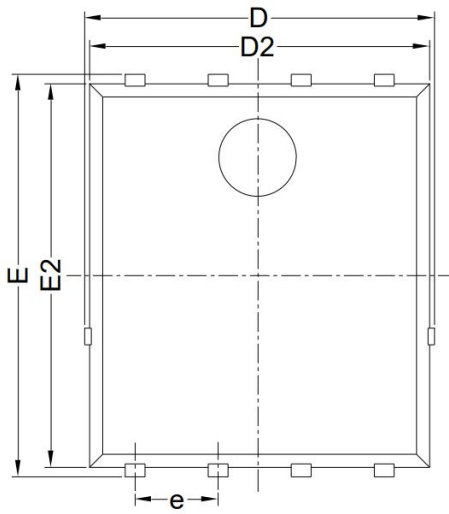
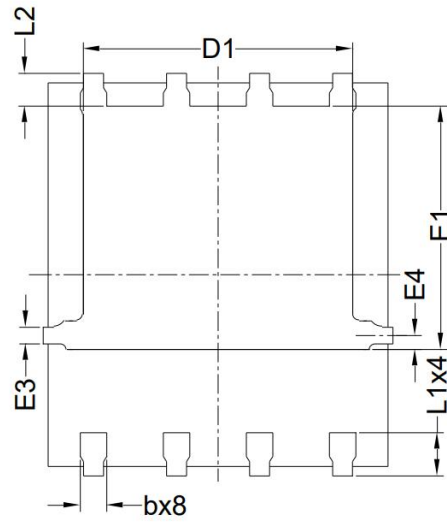


Figure 14. Safe Operation Area

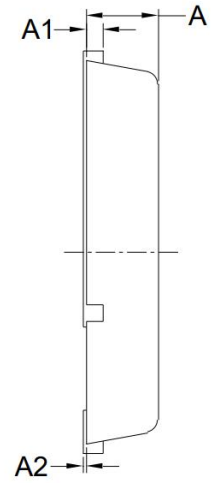
PDFN5*6-8L Package Information



Top View



Bottom View



Side View

Symbol	Dimensions In Millimeters		Dimensions In Inches	
	Min.	Max.	Min.	Max.
D	5.150	5.550	0.203	0.219
E	5.950	6.350	0.234	0.250
A	1.000	1.200	0.039	0.047
A1	0.254 BSC		0.010 BSC	
A2	0.000	0.100	0.000	0.004
D1	3.920	4.320	0.154	0.170
E1	3.520	3.920	0.139	0.154
D2	5.000	5.400	0.197	0.213
E2	5.660	6.060	0.223	0.239
E3	0.254 REF		0.010 REF	
E4	0.210 REF		0.008 REF	
L1	0.560	0.760	0.022	0.030
L2	0.500 BSC		0.020 BSC	
b	0.310	0.510	0.012	0.020
e	1.270 BSC		0.050 BSC	